

# Micr-usb2 Digital Eyepiece for Microscope Installation Instructions

The eyepiece has 1.3M pixel it sends the images to your PC. The eyepiece can also work with other tools, such as projection machine, CD rewriter, and notebook PC, and it will make your work easy, interesting, and effective. It has 32-bit color display at 1024x768 (64 MB video memory).

When first opening the packing box, note carefully the following parts:

·MEM1300 Digital Eyepiece    ·CD-ROM    · Adaptor ring    ·USB2.0 Cable

## System Requirements

Module	CPU	RAM	USB	Operating System
0.1MP	PIII800HZ or above	128M or above	USB 1.0	Win2K\WinXP\Vista
0.35MP	PIII800HZ or above	256M or above	USB 2.0	Win2K\WinXP\Vista
1.3MP	PIV1.4GHZ or above	512M or above	USB 2.0	Win2K\WinXP\Vista\Win7\Mac 10.4
2.0MP	PIV1.8GHZ or above	512M or above	USB 2.0	Win2K\WinXP\Vista\Win7\Mac 10.4
3.0MP	PIV2.0GHZ or above	1G or above	USB 2.0	Win2K\WinXP\Vista\Win7
5.0MP	PIV2.4GHZ or above	2G or above	USB 2.0	Win2K\WinXP\Vista\Win7

## Driver installation

Driverless design, no driver needs to install.

## To connect Digital Eyepiece

Before connect the Digital Eyepiece to your PC, please confirm that the **USB2.0 interface** on your PC is all right.

- Take out one optic eyepiece of the using Microscope, put in the digital eyepiece.
- Connect the **USB2.0 cable** of the Digital Eyepiece to your PC
- “**Find a new hardware—**” of your PC screen

The “**hardware wizard**” window displays. The driver is installed.

## Install software

1. Put the CD into the CD-ROM, the files of CD will be shown on the screen automatically.

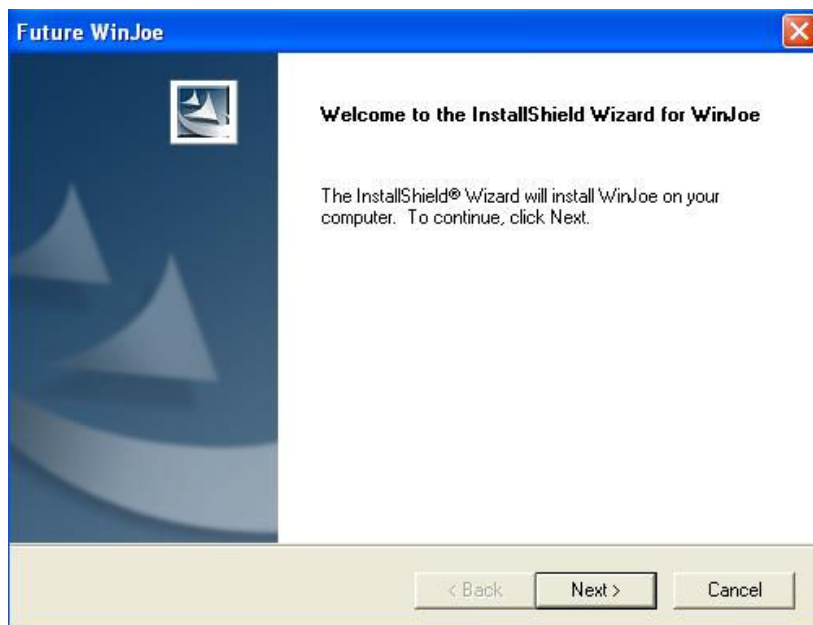
**Notice:** If the CD-ROM can not run automatically, please double click “My computer”, then click the CD with right key, or double-click “setup” under the folder of “software” of CD.

2. Click “Install Future Win Joe” option.

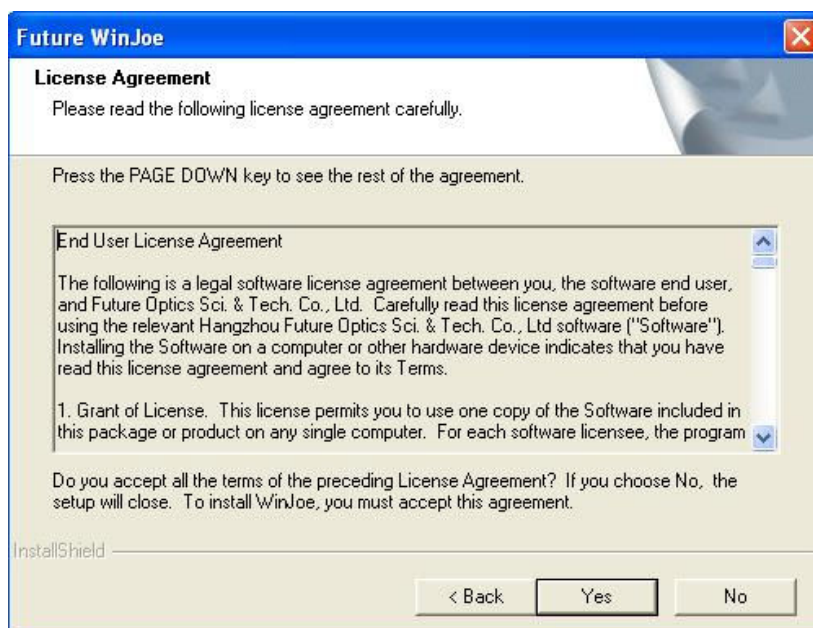
3. Select your language, then click “OK” to confirm



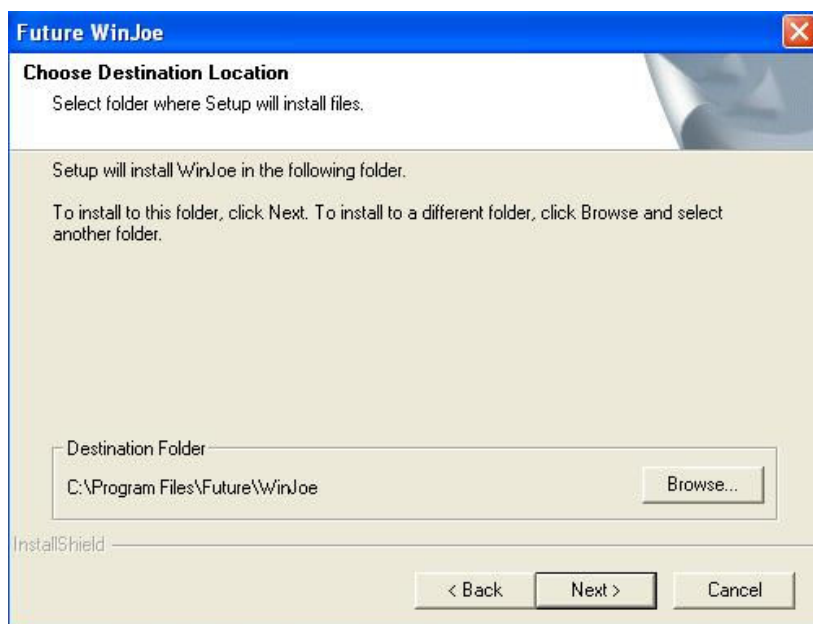
4. Come to the welcome wizard interface, click "next" to continue.



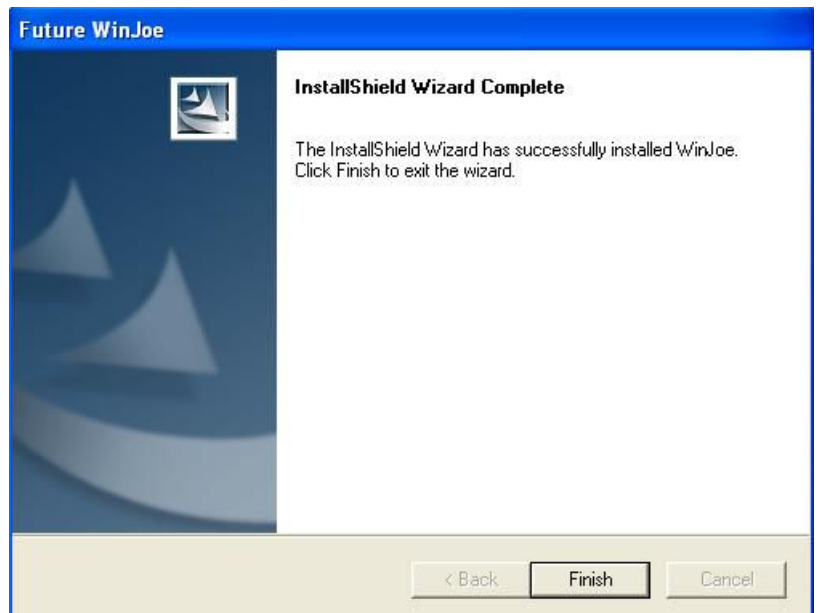
5. You must accept the user license agreement, so please click "yes" to continue.



6. Select the destination folder to place the icon of Future Win Joe (default is "C:\Program Files\Future\WinJoe")

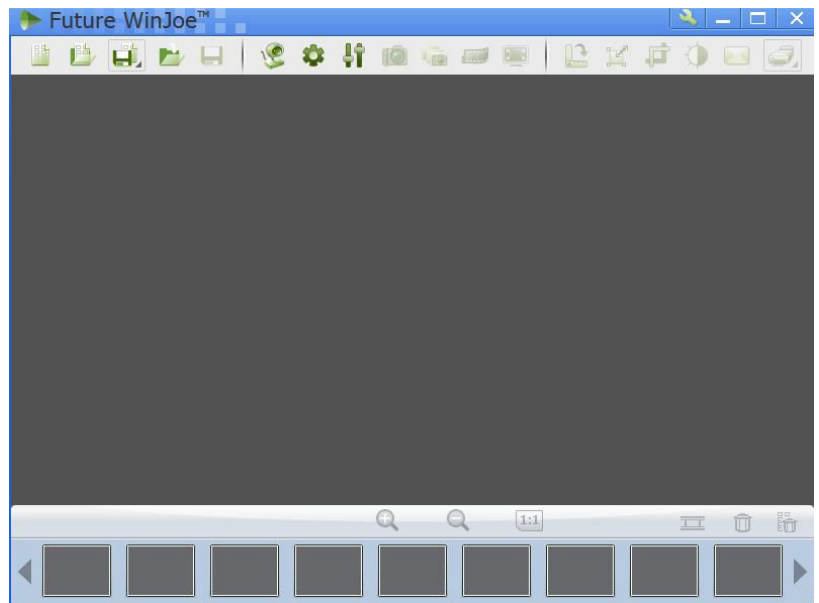


7. Install shield wizard has been installed on your computer, click "finish" to exit.



## Operation

1. Connect the digital device to the USB port,



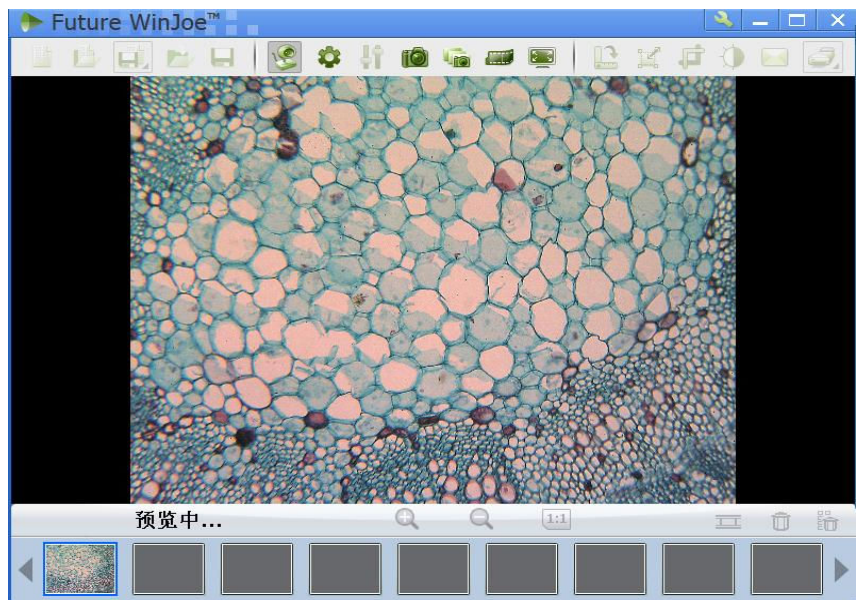
2. Double click icon on desktop "Future WinJoe".



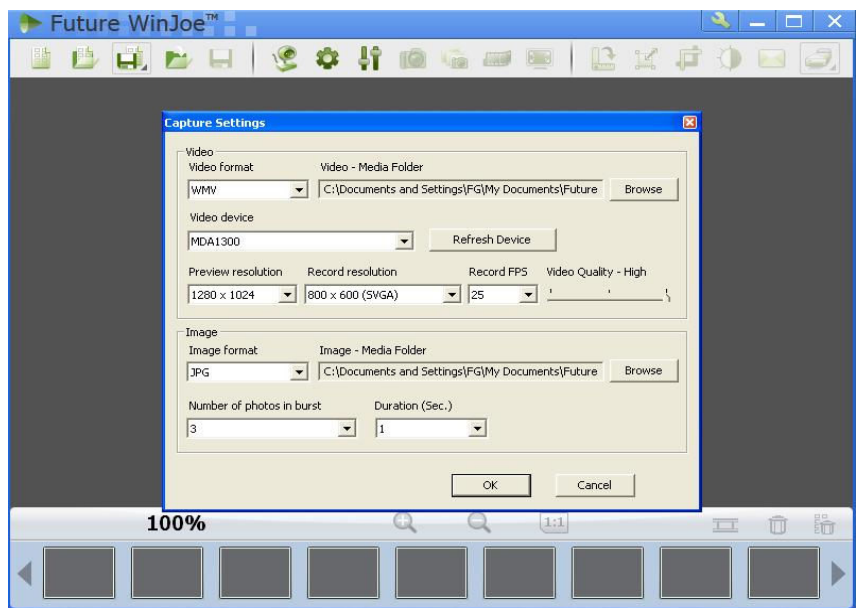
3. There are two main parts in the interface: up-part for alive image showing and the down-part for list of images captured

4. Click "  " to let digital device capture images

5. Adjust the focus-knob of microscope to get a clear image.



6. Before capture, please set the destination folder for saving image files.



7. Click "⚙️", to set the attributes of images shown, including brightness, contrast and so on.

8. By click "🔧" you can get a table of "capture setting" and by changing the related value, and click "👁️" again to turn on capturing, you can view images with new specifications

9. Click "📹" to start video capturing, and click again to stop.

In order to view the pictures you have captured, you should click the pictures and videos in the list area below.



10. After viewing, to click "👁️" to start another capture

11. To know more detailed other functions, please click "Help" or "F1"